



M E L I Á

RESTAURANT CANTINA 1913

MELIÁ
BERLIN



The Hotel

- 364 comfortable bedrooms
- 6 meeting rooms
- wifi access in all areas
- bar meliá tapas
- fitness center with sauna
- lobby bar
- concierge service

In the heart of Berlin

- one of the best hotels in the whole of Germany
- privileged location next to the river Spree, on the corner of Friedrichstrasse and Am Weidendamm
- near Brandenburg Gate, Museum Island and Alexanderplatz
- 100 m from Friedrichstrasse station with excellent access to every part of the city
- exclusive, personalised THE LEVEL service
- meliá tapas bar offers a wide range of traditional spanish tapas with a surprising modern twist
- 24 hour gym, sauna and terrace on top floor
- business hotel with 6 meeting rooms with a maximum capacity for up to 500 people





Rooms & Suites - a place to dream

Meliá Guestroom

(245 bedrooms)

- views of Friedrichstraße or the courtyard

Meliá Guestroom Adapted for Disabled

(24 bedrooms)

- view of Friedrichstraße or the courtyard
- wide doors and emergency alarm system
- 15 bedrooms with no architectural barriers

Meliá Premium Guestroom

(20 bedrooms)

- views of the river Spree and the city
- one bottle of water per day

THE LEVEL Room

(59 bedrooms)

- access to executive lounge THE LEVEL on the 7th floor
- one bottle of water per day
- Nespresso coffee machine
- ironing facilities



All Meliá Guestrooms, Premium Guestrooms & THE LEVEL Rooms also offer:

- 26 - 28 sqm
- flat screen TV, safe and minibar
- large work space and separate seating area
- wireless internet connection
- bathroom with bathtub, bidet and floor heating
- Twin or King size beds



Junior Suite

(13 Suites - up to 45 sqm)

- corner suite with view of the river Spree or panoramic view suite with balcony
- living area

Master Suite

(2 Suites - up to 56 sqm)

- located on 8th floor with view of the city and the river Spree
- sleeping room separated from living room
- meeting table for 4 persons

Presidential Suite

(1 Suite - 110 sqm)

- located on the 8th floor with panoramic view of the city and the river Spree
- provides 4 separated areas: bedroom, living room, meeting room and bathroom

All Suites also offer:

- access to executive lounge THE LEVEL on the 7th floor
- bathroom with double sinks, bidet, bathtub and shower
- Nespresso coffee machine
- large work space and ironing facilities





THE LEVEL Lounge on the 7th floor

Enjoy exclusive services such as:

- private reception and personalized service
- free internet and computer access for our customers
- exclusive breakfast
- tea, coffee and soft drinks all day
- tea time with a selection of sweet snacks
- premium drinks, cocktails and warm tapas between 6:00 P.M. and 9:00 P.M.
- access to more than 3000 magazines and newspapers through Pressreader with our tablets





Restaurants & Bars

A journey through the senses

Panorama Restaurant

(150 seats)

- panoramic view of river Spree and the city
- open for breakfast every morning with an extensive buffet with show cooking area
- lunch and dinner for groups

meliá tapas bar

(100 seats)

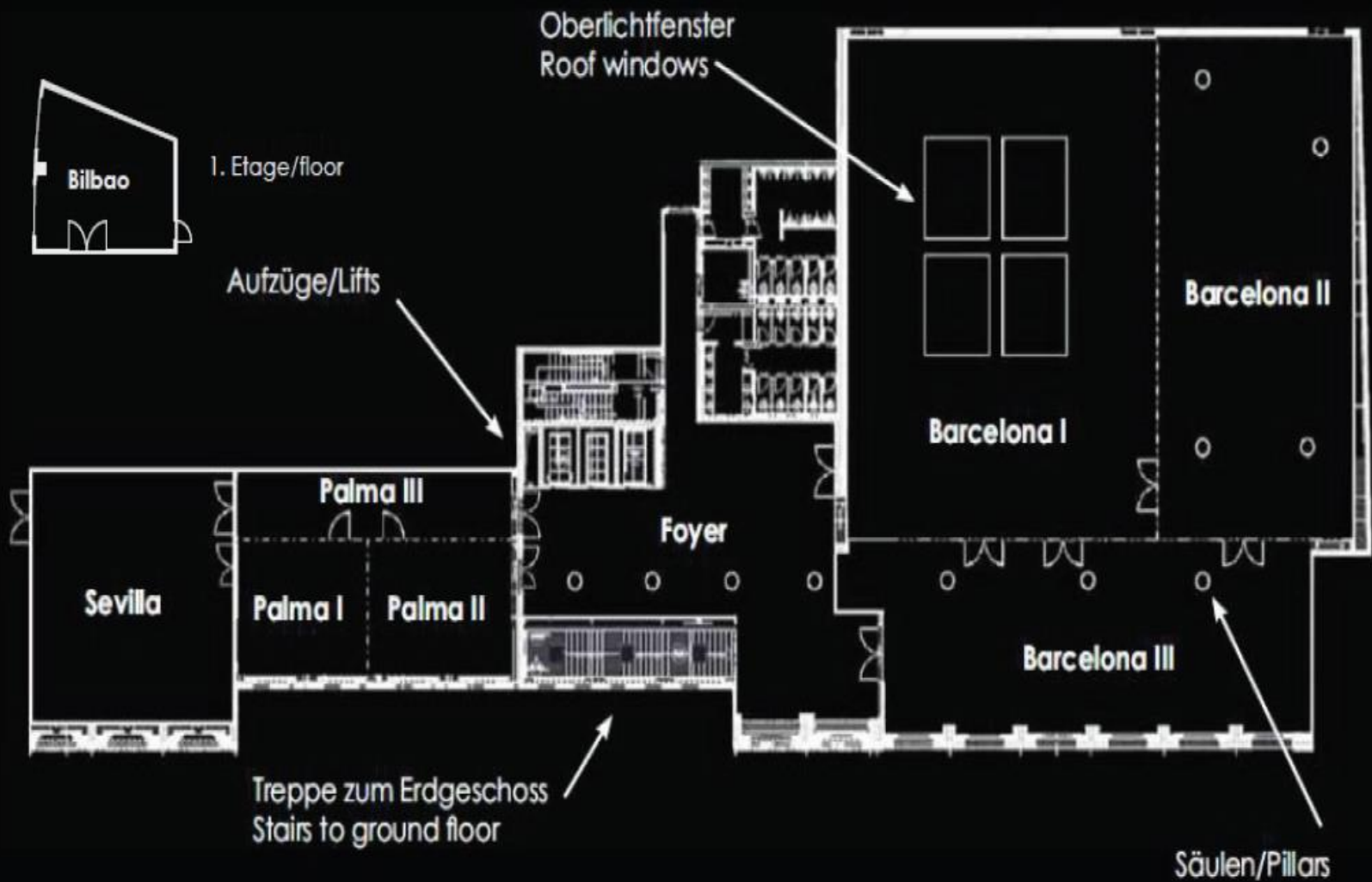
- traditional and innovative tapas creations
- outside terrace with river view during summer time
- live music on Tuesday and Thursday after 9:00 P.M.

meliá lounge & bar

(up to 80 people)

- selection of cocktails, long drinks and spirits
- lounge area





TAGUNGSRÄUME, MABE & KAPAZITÄTEN

ROOMS, MEASUREMENTS & CAPACITIES



MEETING ROOMS TAGUNGSRÄUME	Sq. Mts./ Sq. Ft. M ²	HEIGHT HÖHE	DIMENSIONS MABE	COCKTAIL COCKTAIL	THEATRE THEATER	CLASSROOM PARLAMENT	BANQUET BANKETT	U SHAPE U-FORM	CABARET KABARETT
Barcelona I-III	826 / 8891	3,20	29,5 x 28,0	800	600	450	450	-	300
Barcelona I-II	645 / 6948	3,20	22,4 x 28,8	580	530	400	350	80	240
Barcelona I	394 / 4241	3,20	22,4 x 17,6	350	300	200	200	60	150
Barcelona II	251 / 2702	3,20	22,4 x 11,2	190	170	100	140	40	90
Barcelona III	181 / 1948	3,20	22,7 x 8,0	100	100	60	90	40	-
Sevilla	132 / 1421	3,20	11,5 x 11,5	100	100	60	80	34	48
Palma I-III	140 / 1507	3,20	15,6 x 9,0	100	110	70	70	42	42
Palma I-II	100 / 1076	3,20	15,6 x 6,5	90	80	60	60	36	30
Palma I	50 / 538	3,20	6,5 x 7,8	40	40	28	30	18	-
Palma II	50 / 538	3,20	6,5 x 7,8	40	40	28	30	18	-
Palma III	40 / 431	3,20	15,6 x 2,7	-	-	-	-	-	-
Bilbao	40 / 431	3,00	7,5 x 5,3	30	30	20	20	16	-



Meetings & Events

The hotel offers small meeting rooms to large banquet sized conference rooms for up to 500 delegates.

Our conference facilities feature 6 fully equipped conference rooms with a total conference area of 1200 sqm. Most of the conference rooms provide natural lighting and they are equipped with state-of-the-art audiovisual technology.

Barcelona (I + II + III)

- combinable conference rooms
- from 251 sqm up to 826 sqm
- set up in classroom style for up to 400 delegates
- natural lighting (roof windows)

Sevilla

- conference room with panorama windows with view of Friedrichstraße and river Spree
- 132 sqm
- set up in classroom style for up to 60 delegates
- natural lighting



Meetings & Events

Palma (I + II)

- combinable meeting rooms
- 50 sqm each meeting room
- set up in classroom style for up to 50 delegates
- panorama windows with view of Friedrichstraße

Bilbao

- 40 sqm
- set up in classroom style for up to 20 delegates
- panorama windows with view of river Spree
- access through restaurant

